

1 Pine West Plaza



TOUHEY ASSOCIATES

2 Pine West Plaza
Washington Avenue Ext.
Albany, NY 12205

Phone: 518-438-3521

Fax: 518-452-0600

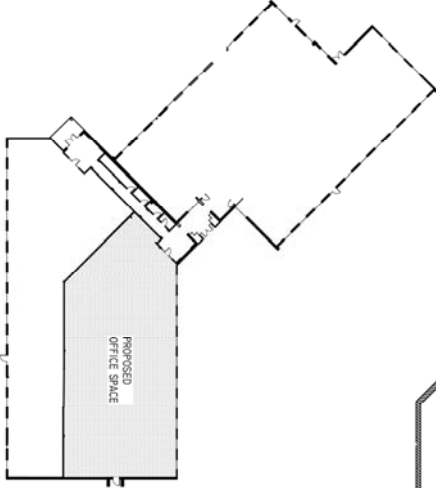
TouheyAssociates.com
info@TouheyAssociates.com

Touhey Associates is a family owned company with over 35 years of experience in real estate acquisition, development and property management. We own and manage over 1 million square feet of office and warehouse space throughout the Capital Region. Pine West Plaza is our full service professional office park located only minutes from I-90, I-87 and the NYS Thruway. This space features private and common entrances, private bathrooms and separate utilities.

BUILDING SIZE:	27,061 SF
SIZE OF SPACE:	8762 RSF
CEILING HEIGHT:	9'
SPRINKLER:	No
NATURAL GAS/ AIR CONDITIONING:	Yes
WATER/SEWER:	Public
ELECTRIC SERVICE:	600 Amp, 480V, 3 Phase
ROOF:	EPDM
CONSTRUCTION:	Masonry
PARKING:	Ample



KEY PLAN



FLOOR PLAN

