

2 Charles Park



Touhey Associates is a family owned company with over 35 years of experience in real estate acquisition, development and property management. We own and manage over 1 million square feet of office and warehouse space throughout the Capital Region. Charles Park is an 8 building Industrial Park located off Route 155 in Guilderland. This park is in a great location close to all major highways and routes.

BUILDING SIZE:	25,155 SF
SPACE AVAILABLE:	9,800 SF Adjacent warehouse space available!
CEILING HEIGHT:	18' Warehouse
SPRINKLER:	Yes
HEAT:	Natural Gas
ELECTRIC SERVICE:	400 Amp, 208V, 3 Phase
ROOF:	Rubber
CONSTRUCTION:	Masonry

**TOUHEY
ASSOCIATES**

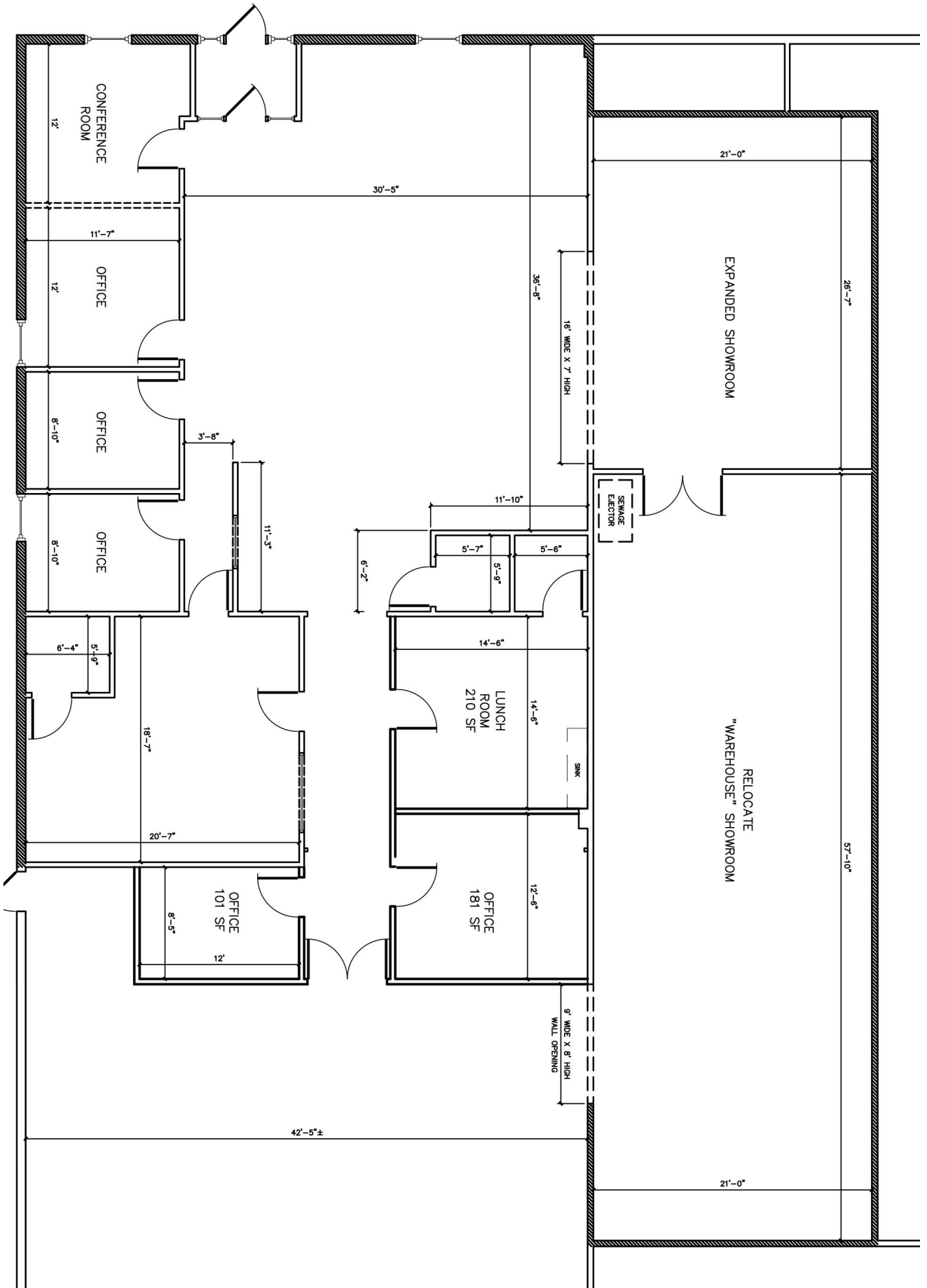
2 Pine West Plaza
Washington Avenue Ext.
Albany, NY 12205

Phone: 518-438-3521

Fax: 518-452-0600

www.TouheyAssociates.com

info@TouheyAssociates.com



One grade level door



Two dock level doors

