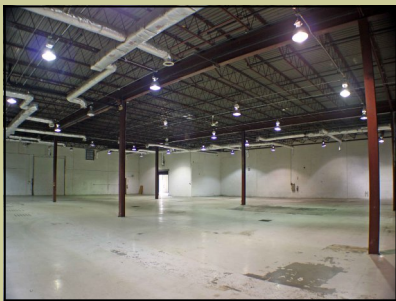


8 Charles Park



Touhey Associates is a family owned company with over 35 years of experience in real estate acquisition, development and property management. We own and manage over 1 million square feet of office and warehouse space throughout the Capital Region. Charles Park is our 6 building Industrial Park located off Route 155 in Guilderland, close to all major routes and only 5 miles from the I90 - I87 interchange.

BUILDING SIZE: Warehouse: 24,000 SF (200' x 120')

Office: 3,024 SF
Total: 27,024 SF

CEILING HEIGHT: 18' 2" Clear (Warehouse)

CLEAR SPAN: 40'

SITE SIZE: 4 Acres approximately

SPRINKLER: Wet System

ELECTRIC SERVICE: 800 Amp, 480V, 3 Phase

HEAT: Natural Gas

AIR CONDITIONING: Yes, office area and entire warehouse is Climate Controlled!

OVERHEAD DOORS:
1 Grade Level: 14' x 14'
1 Grade Level: 9' x 10'
3 Dock Level: 9' x 10'
1 Dock Level: 8' x 8'

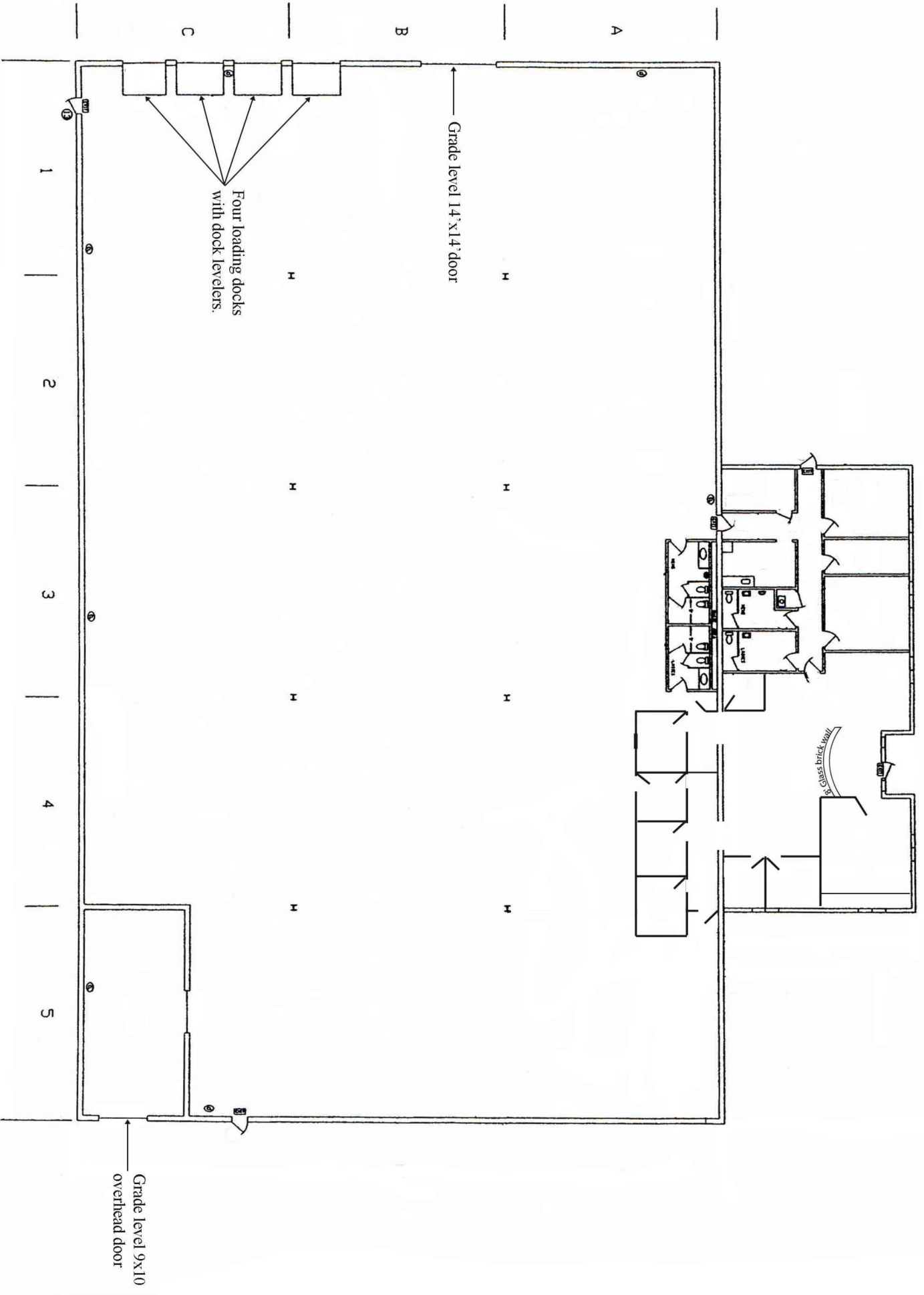
TOUHEY ASSOCIATES

Phone: 518-438-3521

Fax: 518-452-0600

TouheyAssociates.com

info@TouheyAssociates.com





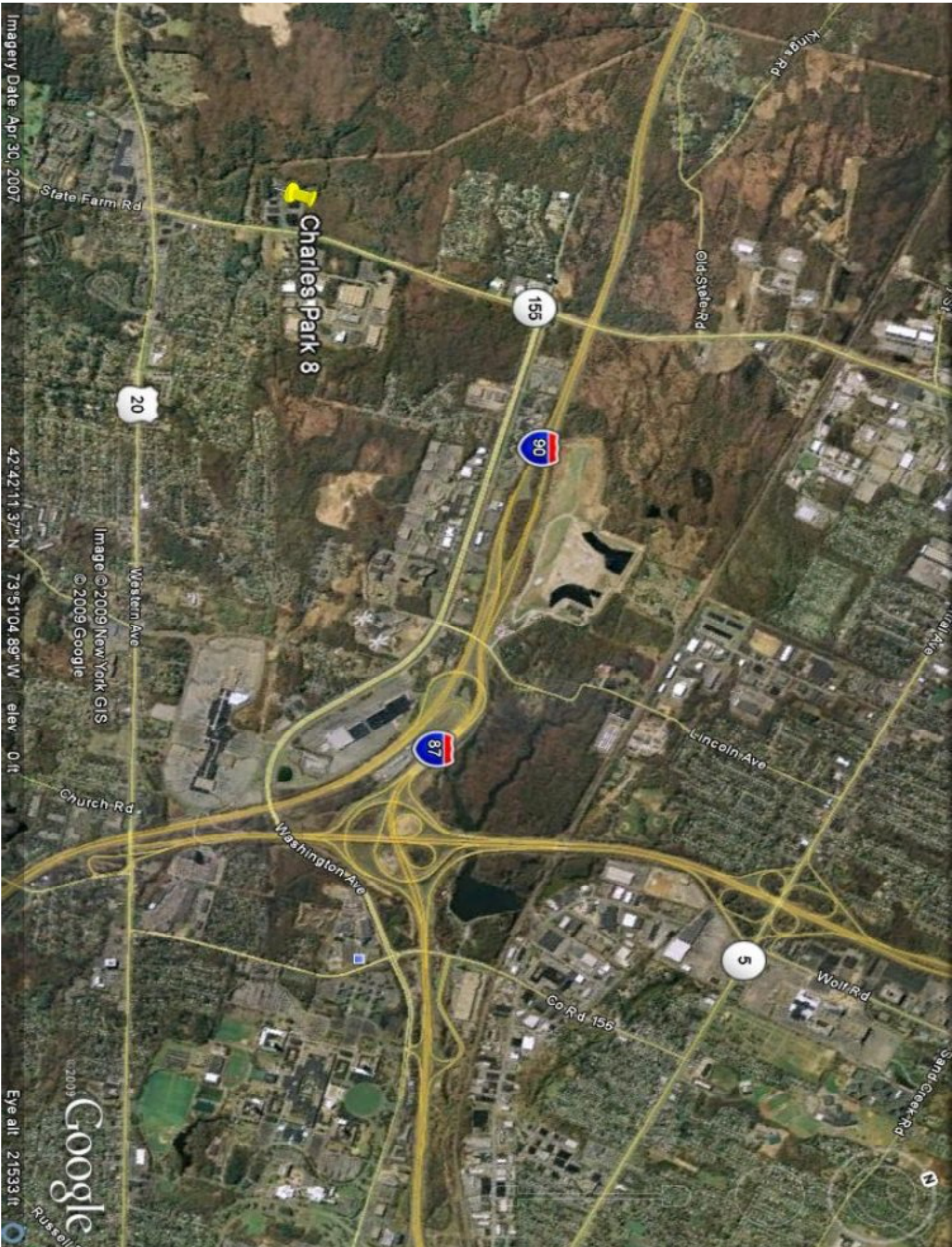
Imagery Date: Apr 30, 2007

Image © 2009 New York GIS
© 2009 Google

42°42'11.81" N 73°53'10.73" W elev. 0 ft

© 2009
Google

Eye alt 635 ft



Imagery Date: Apr 30, 2007

42°42'11.37" N 73°51'04.89" W elev: 0 ft

Image © 2009 New York GIS
© 2009 Google

© 2009
Google
Russell

Eye alt: 21533 ft