

325 Washington Avenue Extension



TOUHEY ASSOCIATES

**2 Pine West Plaza
Washington Avenue Ext.
Albany, NY 12205**

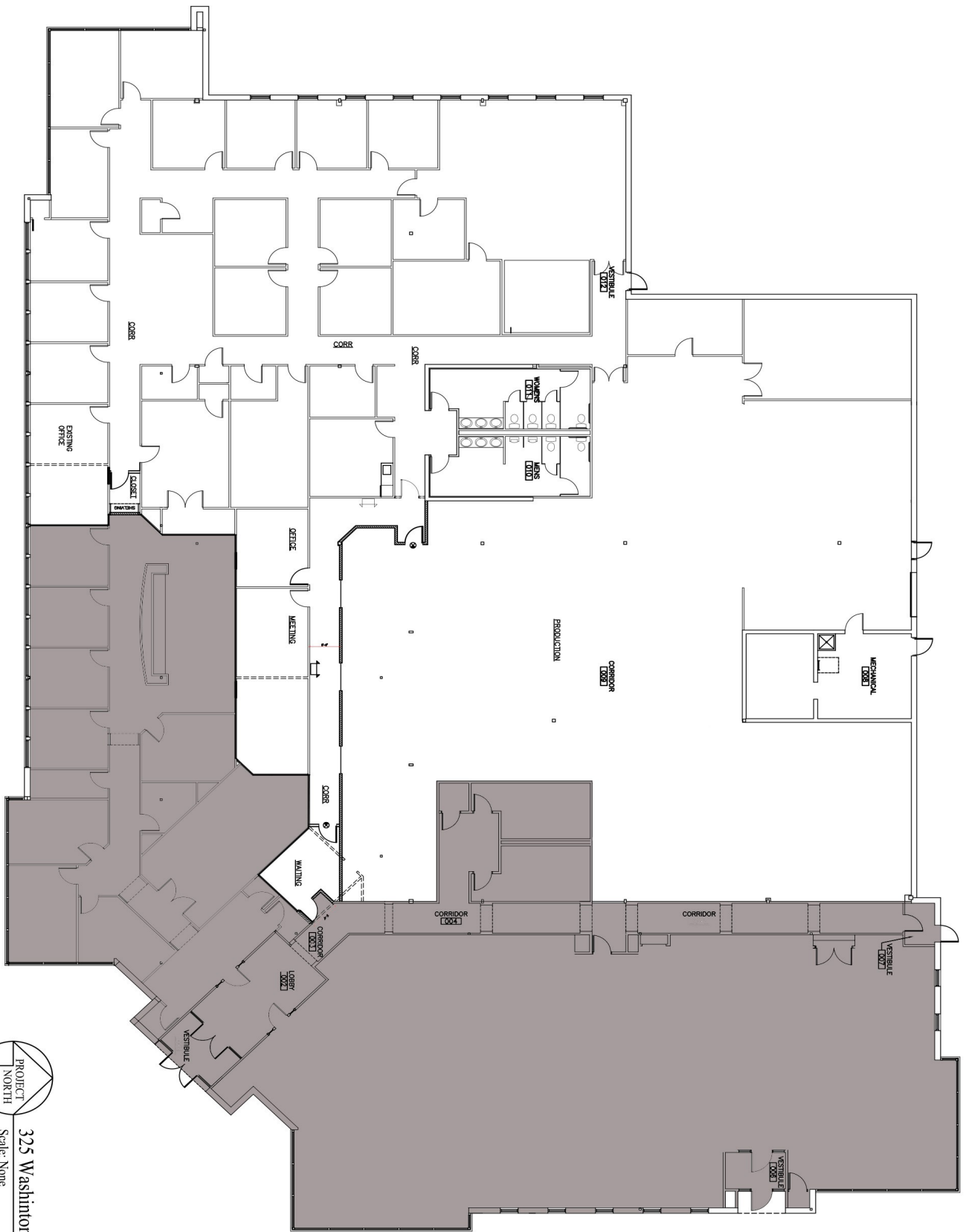
Phone: 518-438-3521

Fax: 518-452-0600

**TouheyAssociates.com
info@TouheyAssociates.com**

Touhey Associates is a family owned company with over 35 years of experience in real estate acquisition, development and property management. We own and manage over half a million square feet of office and warehouse space throughout the Capital Region. Part of our full service office park Pine West Plaza, 325 Washington Avenue Extension is located only minutes from all major highways and routes.

BUILDING SIZE:	27,760 SF
RENTABLE SF:	17,424 RSF 7,000 SF of Production Area! Available January 2025
CEILING HEIGHT:	9'
SPRINKLER:	No
NATURAL GAS/ AIR CONDITIONING:	Yes
WATER/SEWER:	Public
ELECTRIC SERVICE:	2,000 AMP, 480V, 3 Phase Separately Metered Utilities
ROOF:	EPDM
CONSTRUCTION:	Masonry
PARKING:	Ample



325 Washington Ave. Ext.

Scale: None

