

# 21A Railroad Avenue



Touhey Associates is a family owned company with over 35 years of experience in real estate acquisition, development and property management. We own and manage over 1 million square feet of office and warehouse space throughout the Capital Region. Our 21A Railroad Avenue property located in the Town of Colonie is only minutes from all major highways and routes.

BUILDING SIZE:	28,163 SF
SPACE AVAILABLE:	5,855 SF
CEILING HEIGHT:	12' - 17'
SPRINKLER:	Wet System
NATURAL GAS:	Yes
WATER:	Public
SEWER:	Public, Grinder Pump
ELECTRIC SERVICE:	600 AMP, 208V, 3 Phase
ROOF:	Standing Seam
PARKING:	Ample
OVERHEAD DOORS:	1 Dock Level 8' x 8'

## **TOUHEY ASSOCIATES**

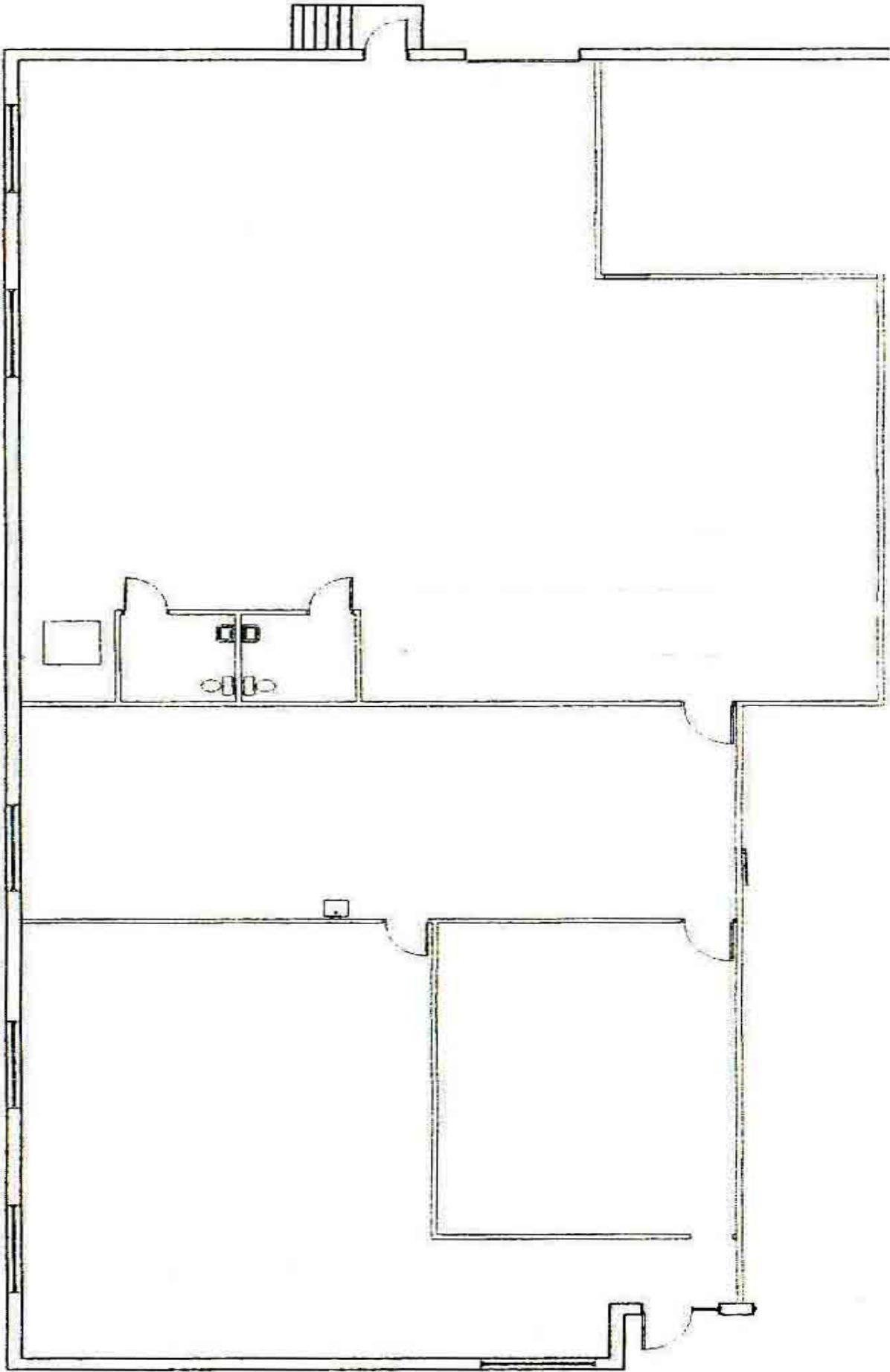
**2 Pine West Plaza  
Washington Avenue Ext.  
Albany, NY 12205**

**Phone: 518-438-3521**

**Fax: 518-452-0600**

**[www.TouheyAssociates.com](http://www.TouheyAssociates.com)**

**[info@TouheyAssociates.com](mailto:info@TouheyAssociates.com)**



Imagery Date: Apr 30, 2007

42°41'32.43" N 73°48'42.04" W elev 0ft

Image © 2009 New York GIS

© 2009 Google  
Eye alt 1402 ft

21 Railroad Ave.

21A Railroad Ave.

