

21 Railroad Avenue



**TOUHEY
ASSOCIATES**

2 Pine West Plaza
Washington Avenue Ext.
Albany, NY 12205

Phone: 518-438-3521

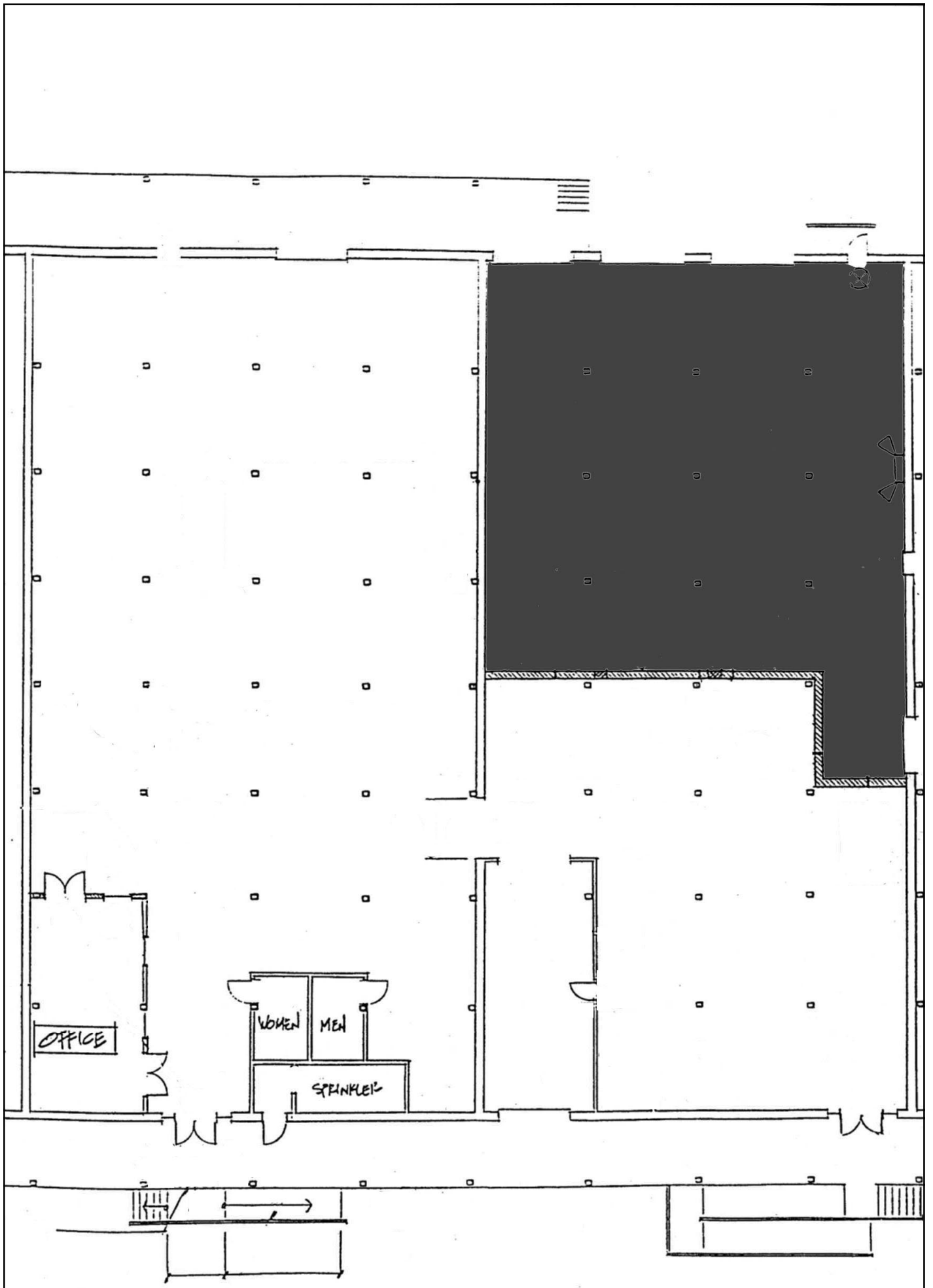
Fax: 518-452-0600

TouheyAssociates.com

info@TouheyAssociates.com

Touhey Associates is a family owned company with over 35 years of experience in real estate acquisition, development and property management. We own and manage over 1 million square feet of office and warehouse space throughout the Capital Region. Our 21 Railroad Avenue property located in the Town of Colonie is only minutes from all major highways and routes.

BUILDING SIZE:	37,000 SF
SPACE AVAILABLE:	11,556 SF
CEILING HEIGHT:	16'
SPRINKLER:	Wet System
NATURAL GAS:	Yes
WATER:	Public
SEWER:	Public
ELECTRIC SERVICE:	200 AMP, 208V, 3 Phase
PARKING:	Ample
OVERHEAD DOORS:	2 Dock Level



Imagery Date: Apr 30, 2007

42°41'32.43" N - 73°48'42.04" W elev 0 ft

Image © 2009 New York, GIS

21 Railroad Ave

21A Railroad Ave.

©2009 Google
Eye alt: 1402 ft

